

Our Promise.

We are committed to walking alongside people and their care-partners.

At Otsuka, we believe patients are people first and we must deliver healthcare as human care. And to the families and care-partners on this journey, we are dedicated to standing with them, the way they stand with their loved ones—and offering the tools they need to care for the health of others and themselves.



Discover our commitment
to health for every mind



We defy limitation, so that others can too.

Otsuka is a healthcare company driven by our purpose and defined by our beliefs. At our core is perseverance, a fierce determination to overcome any obstacle regardless of setbacks, on behalf of patients and their loved ones.

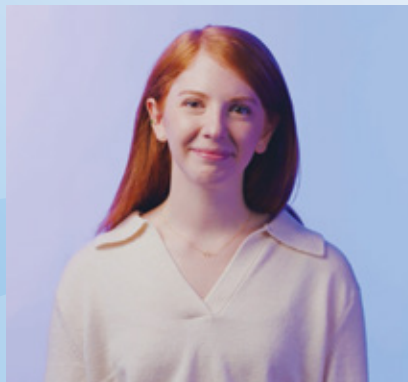


We have an unwavering belief in doing more and going above and beyond—under any circumstances—so that patients can push past the limitations of their

disease and achieve more than they thought was possible every day.

Our mission is clear: Otsuka-people, creating new products for better health worldwide.

All photos represent models and not real patients.

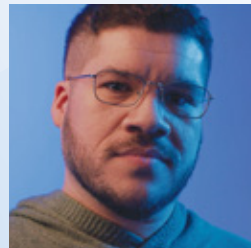


Health For Every Mind

By recognizing the inherent value of every mind, we have the power to change the trajectory of people's lives. This is why we will not rest until mental illnesses and brain diseases are approached with the same priority and urgency as our physical health and recognized as chronic diseases that warrant early, equitable, and accessible intervention.

Social Impact

For more than 100 years, our people have been passionate about helping others, and we consider it our privilege to walk alongside our communities as allies and advocates. We're committed to investing in efforts that help remove stigma and discrimination, increase access to care, and address social determinants of health in the communities we serve.



PRODUCTS

Our driving philosophy is to serve those with unmet medical needs. Otsuka's US companies share a deep commitment to the development and commercialization of innovative products in the spaces of neuroscience, nephrology, and digital medicine.

PROGRAMS

Health for every mind means empowering communities to fight stigma, sharing stories of lived experience, providing educational spaces for mental health professionals, and more.

POLICY

We shape and respond to the regulatory, reimbursement and legislative environment so that Otsuka can research, develop, and deliver treatment to those in need.

ADVOCACY

As staunch advocates for advancements in care, we actively work to bridge gaps in mental health support among underserved communities, promote awareness of brain diseases, destigmatize mental health through partnership, and sponsorships.